



East Meath-North Dublin Grid Upgrade

Capital Project CP1021
Step 4 Consultation
7 September 2022 to 30 November 2022



East Meath-North Dublin Upgrade - Step 4 Consultation

East Meath - North Dublin Grid Upgrade

Step 4 Consultation Overview

Fingal PPN – Housing, Planning and
Transport

27th October 2022





Introduction to EirGrid

- EirGrid operates and develops the electricity grid in Ireland. We send power from where it is generated to where it is needed.
- We are owned by the Irish Government, and we are a regulated utility. This means we operate solely for the benefit of the electricity user.
- We do not generate electricity – we bring it from generators across the grid. We also operate some interconnectors with neighbouring electricity grids.



Introduction to EirGrid

- We run the wholesale electricity market. This ensures electricity is always available at the most economic price possible.
- We do not own the electricity grid, and have no vested interest in adding to it.
- We only upgrade or add to the grid in response to government policy, or where it is an essential response to secure Ireland's electricity supply.

What is the East Meath-North Dublin Grid Upgrade

The East Meath-North Dublin Grid Upgrade:

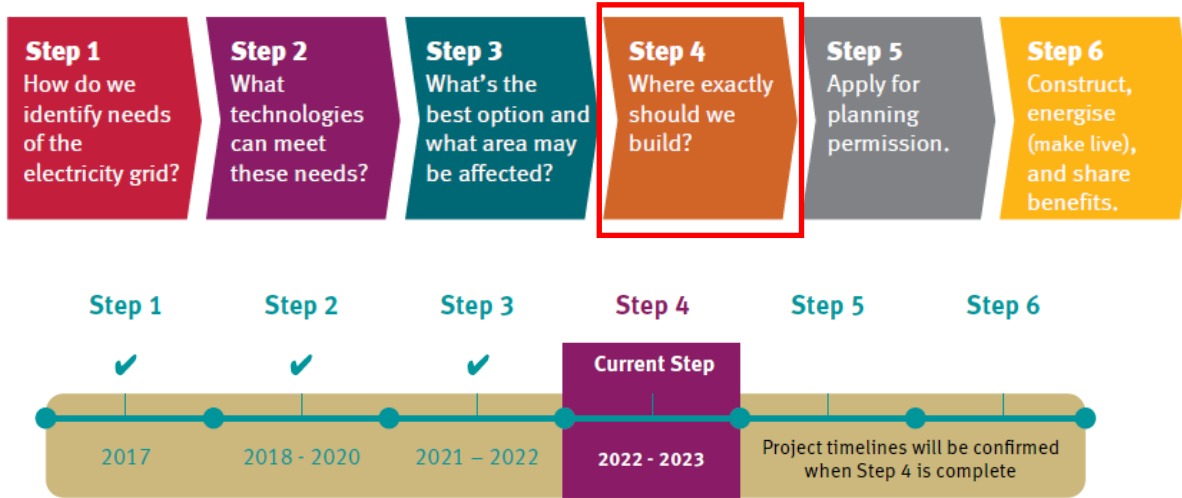
Will add a high-capacity 400 kV underground cable electricity connection between Belcamp Substation in Dublin and Woodland Substation in Meath;

Will strengthen the electricity network in the east of Meath and the north of Dublin to improve the transfer of power across the existing transmission network.

We need to upgrade and strengthen the network to:

- address the increased electricity demand in east Meath and north Dublin due to economic development and population growth,
- reduce the use of and reliance on fossil fuels for electricity generation,
- facilitate further development of renewable energy generation, onshore and offshore, and;
- assist in achieving climate action targets of having up to 80% of electricity coming from renewable sources by 2030.

What will happen in Step 4?

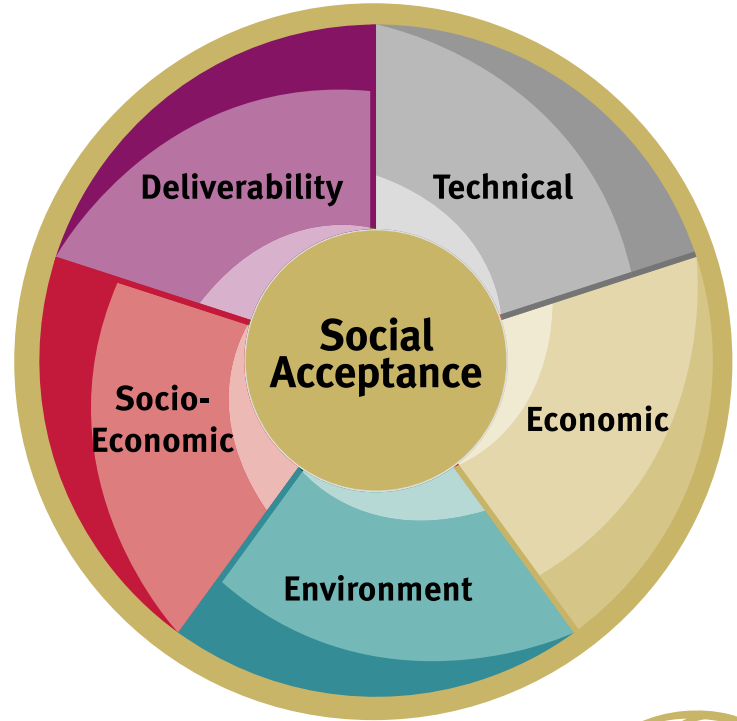


- Public Consultation **Sep – Nov 2022**
- Announce Emerging Best Performing route option in **Spring 2023** and consult locally with stakeholders on this
- Announce a final route option in **Summer 2023**

Step 4 Studies

We are doing further investigations and assessments which build on those we completed in Steps 1, 2 and 3.

We are assessing and comparing the route options during these investigations under five categories



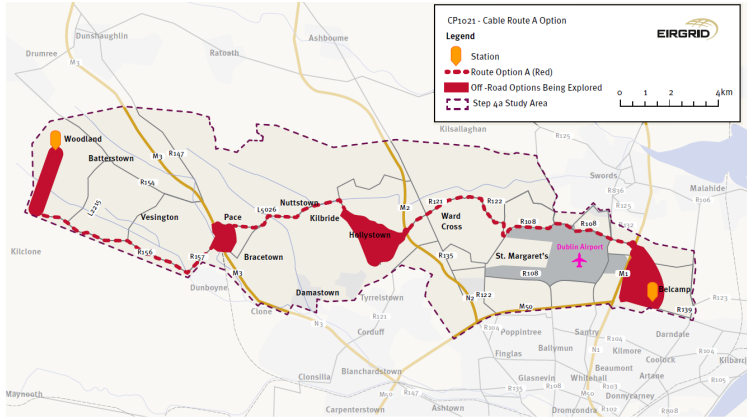
How do we plan route options?

- | Avoid motorways, and maximise the use of national, regional and local roads being congruent of the width and quality of the road;
- | Avoid town centers and industrial estates and minimise impact on communities where possible;
- | Avoid going off-road, through private land and through agricultural land where possible;
- | Avoid sensitive natural and built heritage locations including protected areas;
- | Avoid clusters of other services in the road such as water, gas and drainage;

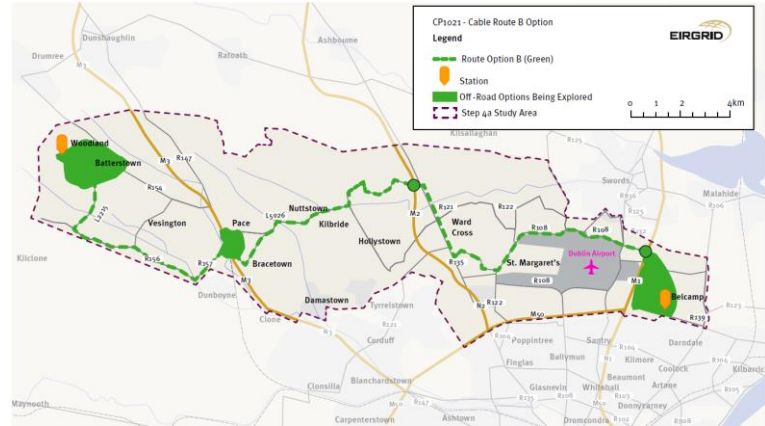
Common to all routes

- All route options:
 - Start from Woodland substation
 - Travel to Belcamp substation
 - Cross a motorway: M1, M2, M3
 - Have off-road corridors
- Further route options could be considered by combining sections of each of the proposed routes.

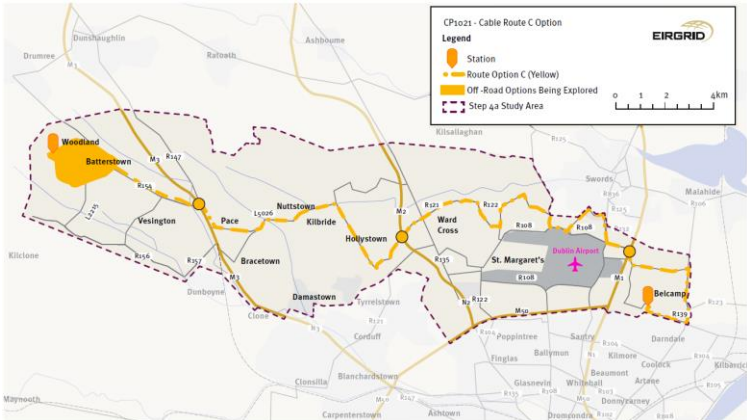
Option A (Red)



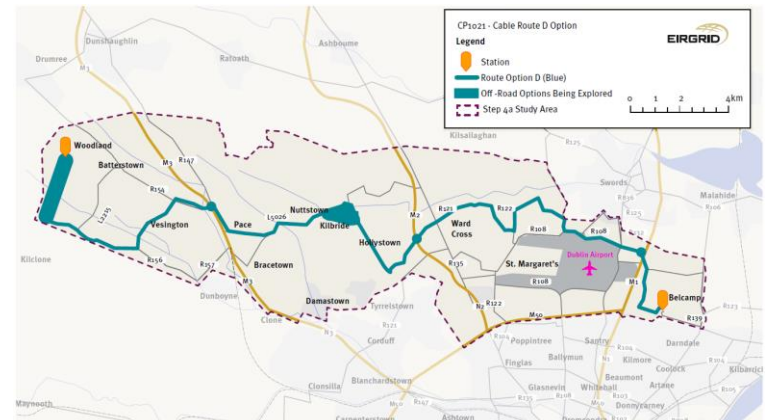
Option B (Green)



Option C (Yellow)



Option D (Blue)

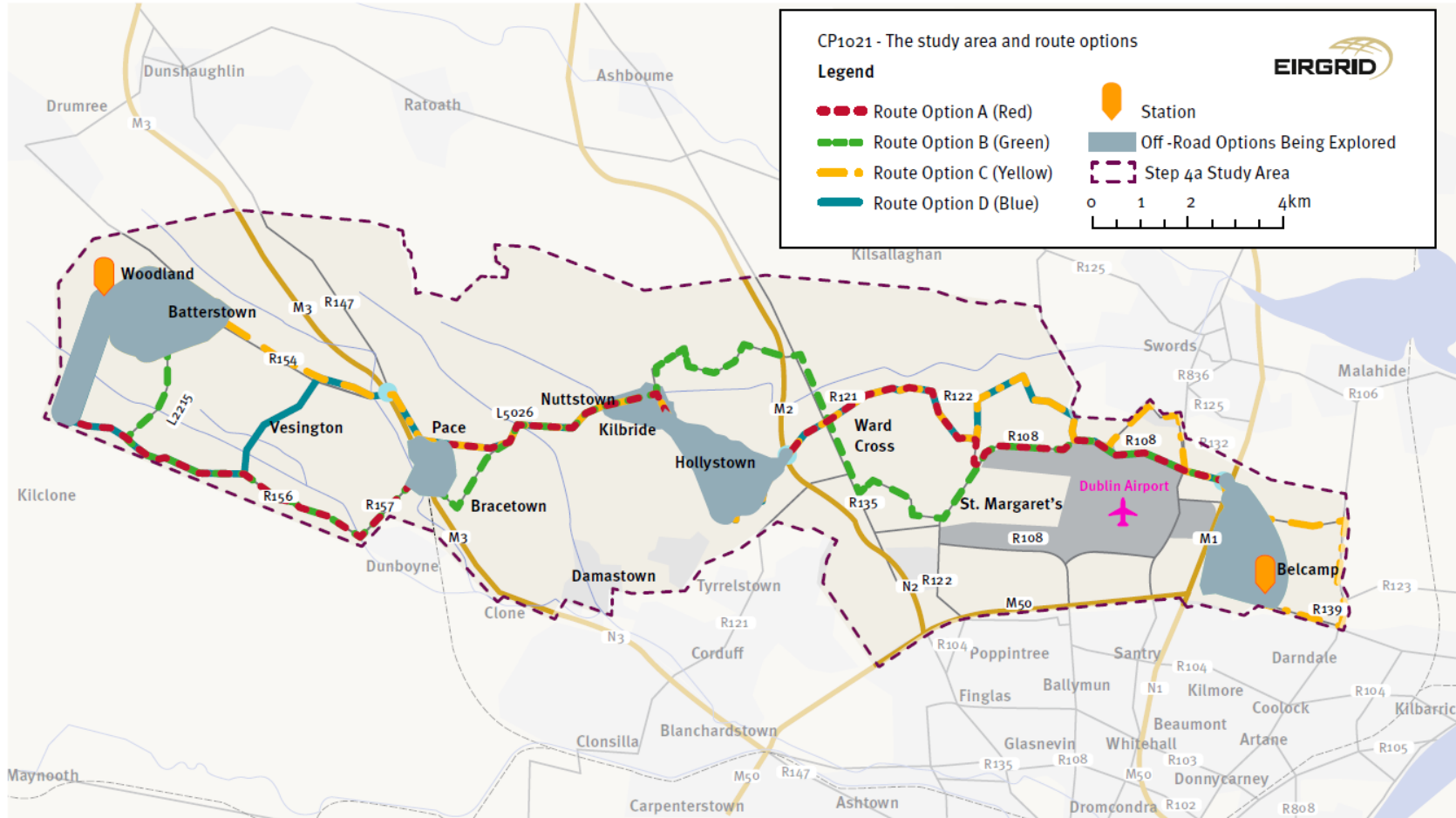


CP1021 - The study area and route options



Legend

- Route Option A (Red)
 - Route Option B (Green)
 - Route Option C (Yellow)
 - Route Option D (Blue)
 - Station
 - Off-Road Options Being Explored
 - Step 4a Study Area
- 0 1 2 4km







All Route Options

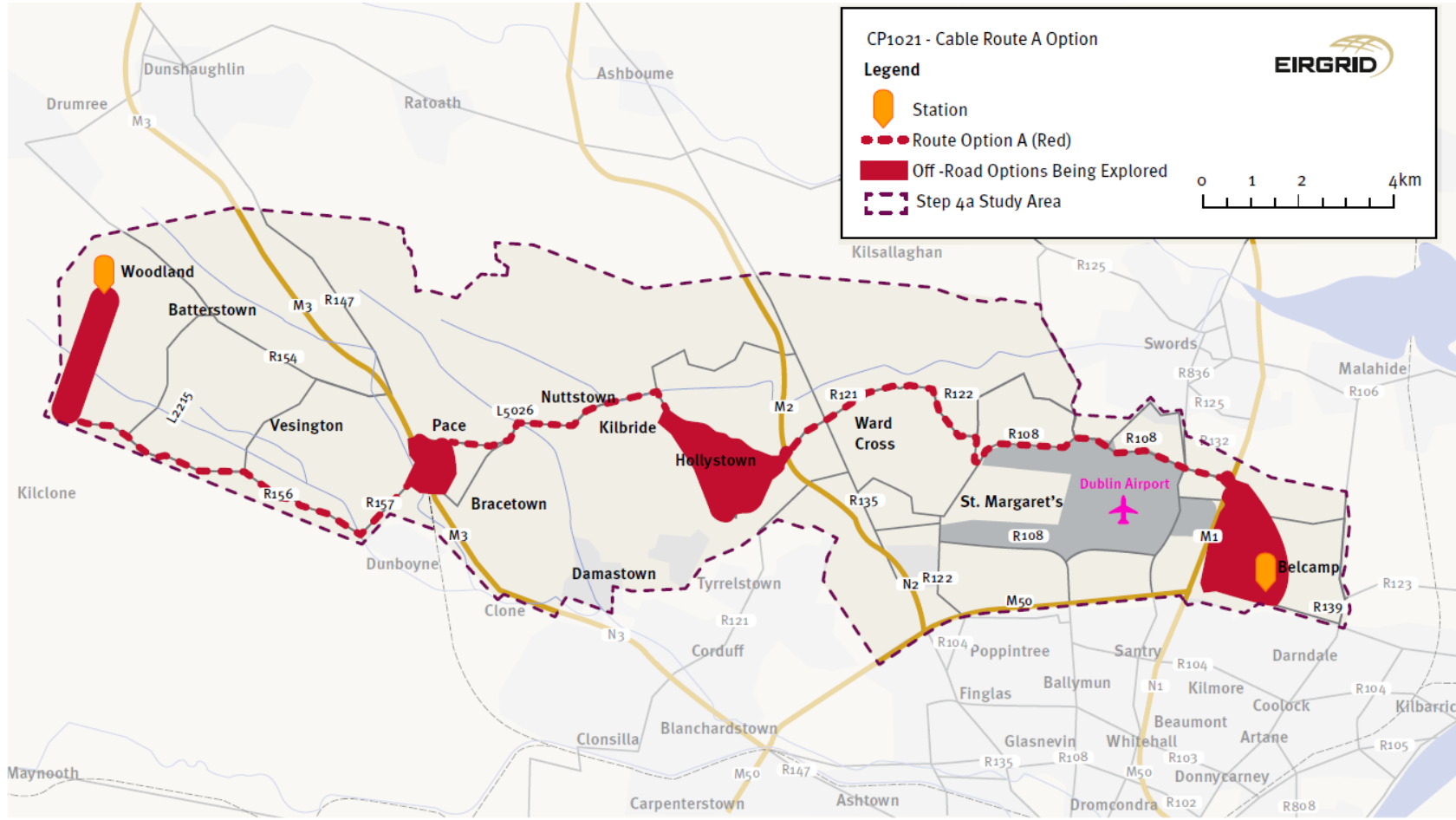
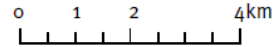


CP1021 - Cable Route A Option



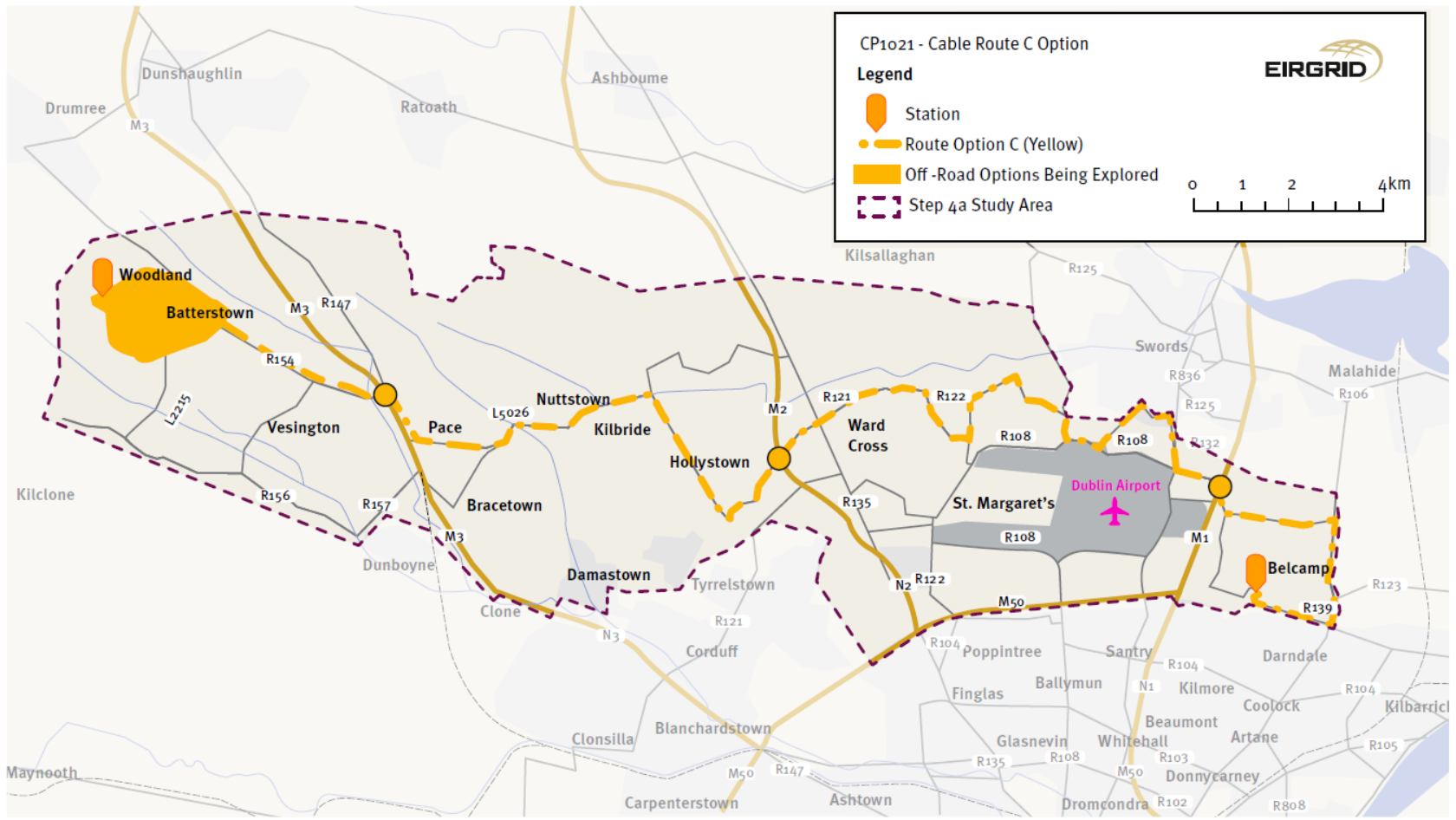
Legend

-  Station
-  Route Option A (Red)
-  Off-Road Options Being Explored
-  Step 4a Study Area



Option A
(Red)

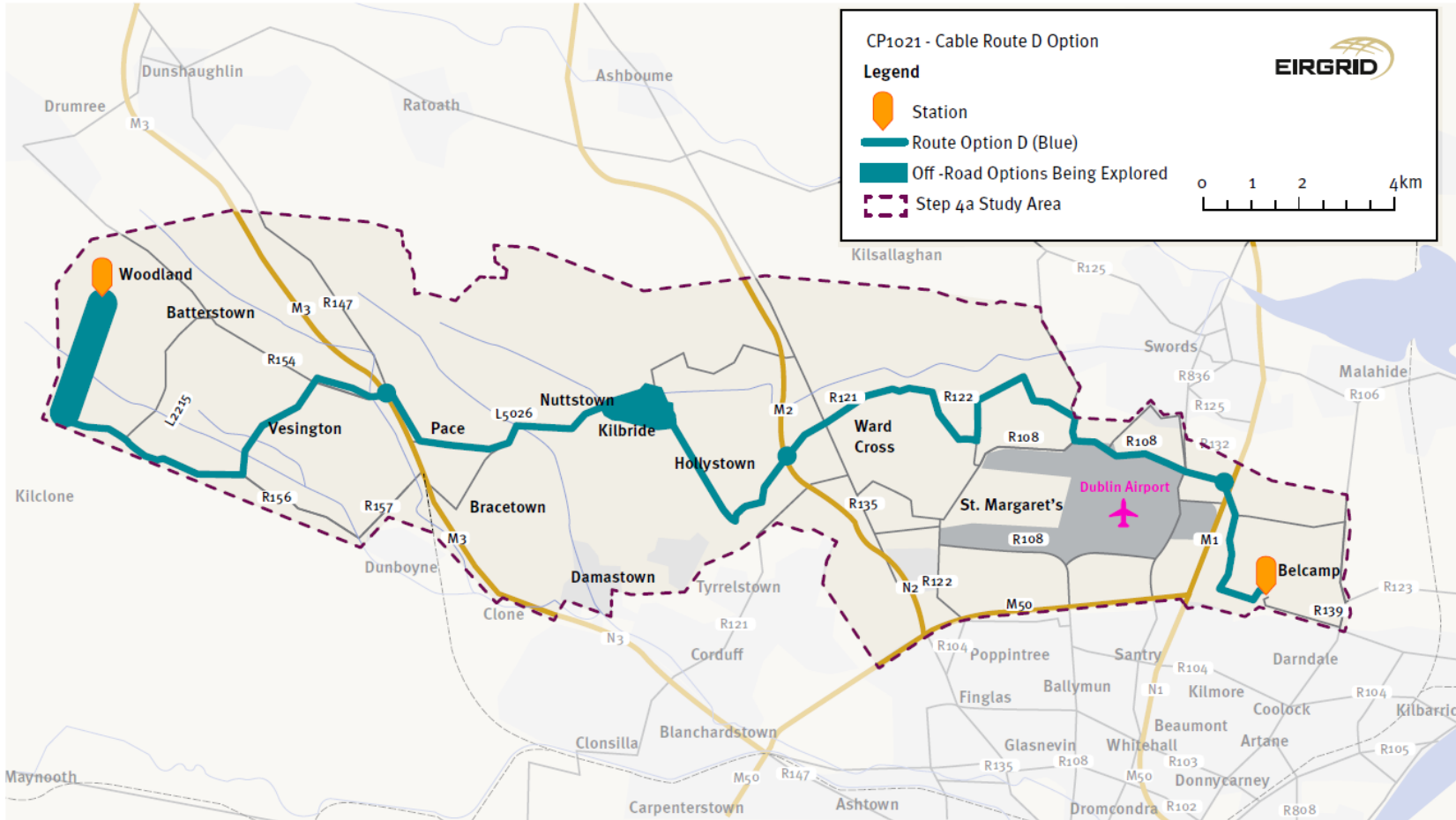




Option C
(Yellow)



EIRGRID



Option D
(Blue)

What does underground cabling look like?



Figure 1



Figure 2



Figure 3



Figure 4



Figure 5

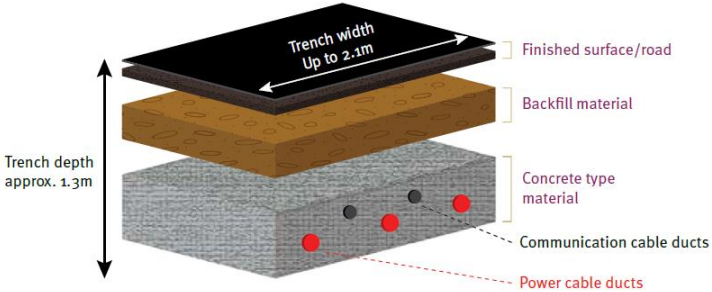


Figure 6



What benefits is this project facilitating?

Benefits of the East Meath-North Dublin Grid Upgrade



Competition

Apply downward pressure on the cost of electricity.



Sustainability

Help facilitate Ireland's transition to a low carbon energy future.



Security of Supply

Improve electricity supply for Ireland's electricity consumers.



Economic

Contribute to the regional economy and support foreign direct investment.



Community

Deliver community benefit in the areas that facilitate the project infrastructure.



We're getting ready to upgrade your electricity grid and want to hear what you think.

Communications and Engagement

- 12-week consultation from 7 Sept - 30 Nov 2022
- 4 Route Options: **Red Green Yellow Blue**
- All advertising, engagements & communications points to 2 central locations where all content will be published:
 - Consultation portal: **consult.eirgrid.ie**
 - EirGrid Website: **www.eirgrid.com**

Ways to Have Your Say:

- [Consult.eirgrid.ie](https://consult.eirgrid.ie) to host all submissions
- Free post questionnaire delivered to residents within study area (circa 12K)
- Project email address EastMeathNorthDublin@eirgrid.com
- Traditional post (freepost)

Media & Advertising

Regional press: Meath Chronicle, Dublin People, Meath Herald
Local radio: FM104, LMFM
Social media: FB, TW, INSTA, Spotify
Digital Out of Home: DigiTower SV, Tesco Live, AdTowers
Hyper-Local: GAA sponsorships

Consultation Activity Overview

Local activation

6 x Open days bi-weekly.
Swords & Coolquay now completed.
12th Oct – Hilton Hotel, Malahide Rd, 13th Oct, Sweeneys, Kilbride
26th Oct - St Margaret's GAA Club, 27th Oct - McCaffreys, Batterstown, Co Meath.
5 x Mobile Information unit @ 15-17th Nov
3 x Webinars @ 1 per month: Sept, Oct & Nov
[What's Happening Now? \(eirgridgroup.com\)](http://eirgridgroup.com)
Meath Co Council Energy Expo – 22 October. Ardoyne Hotel, Navan
Fingal & Meath Public Participation Network
Public Representative Briefings

Submit Your Feedback



- Make a submission or complete the questionnaire at: consult.eirgrid.ie



- Send an email to EastMeathNorthDublin@eirgrid.com



- Send your submission by post:
**East Meath North Dublin Grid Upgrade,
EirGrid, Freepost FDN 5312,
160 Shelbourne Road,
Ballsbridge, D04 FW28**

- **Contact your Community Liaison Officer:**

Eoghan O'Sullivan 087 2477732

Grainne Duffy 085 8874798





Thank You.

We are happy to answer questions.

